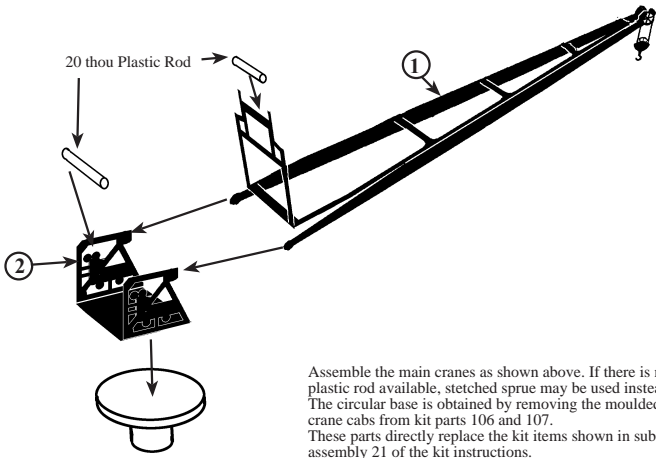
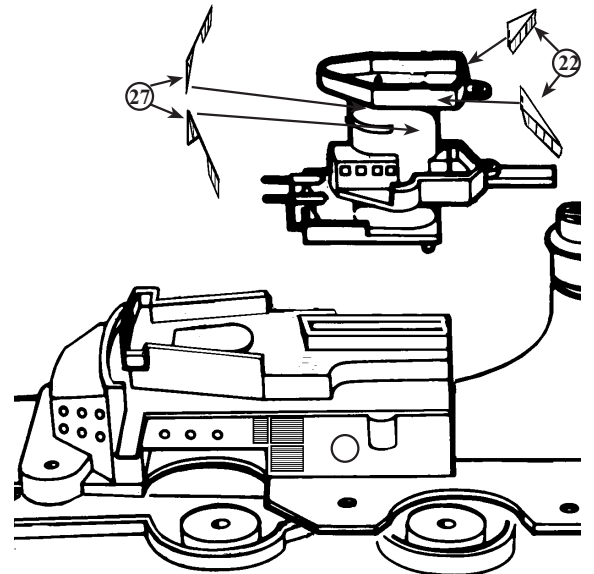


BOAT CRANE ASSEMBLY



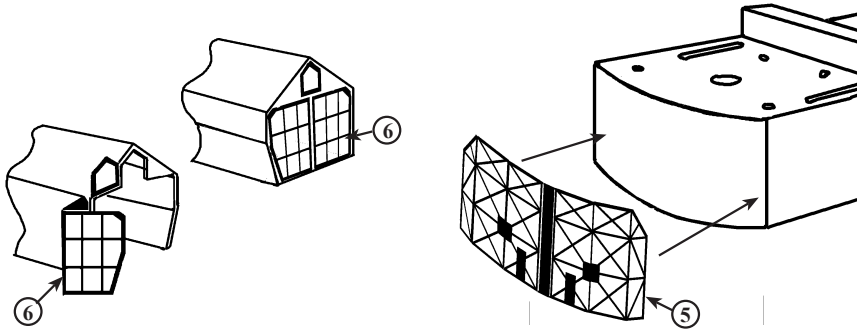
Assemble the main cranes as shown above. If there is no plastic rod available, stretched sprue may be used instead. The circular base is obtained by removing the moulded crane cabs from kit parts 106 and 107. These parts directly replace the kit items shown in sub assembly 21 of the kit instructions.

PLATFORM YARDARM LOCATION



HANGAR DOOR ASSEMBLY

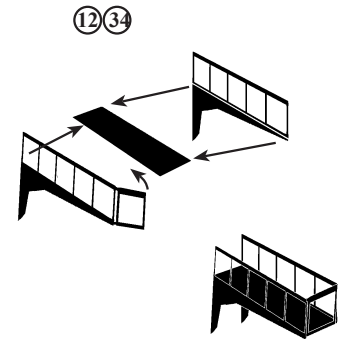
Fit forward hangar doors over the smooth surface on the kit parts 42 and 43. Alternatively, the doors may be modelled in the open position by cutting the top off the photo etched part 6 as shown left and folding the main door back. Cut away the plastic end of the kit part so that it takes the shape shown below, and assemble the door parts thus.



To fit the aft hangar doors to the superstructure, the raised detail must first be removed from the front of kit part 50, to which surface the photo etched part 5 is then applied.

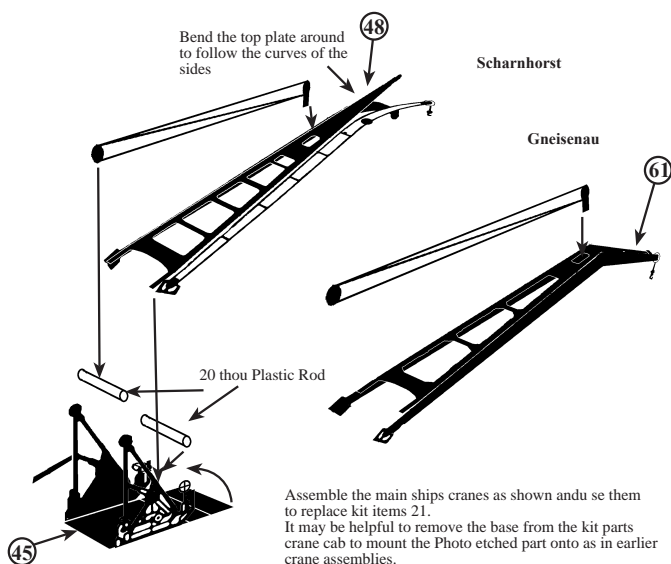
BRIDGE WING ASSEMBLY

Remove the bridge wing extensions from kit part 9 and replace with the assembled photo etched items 12 (Bismark) and 34 (Tirpitz)



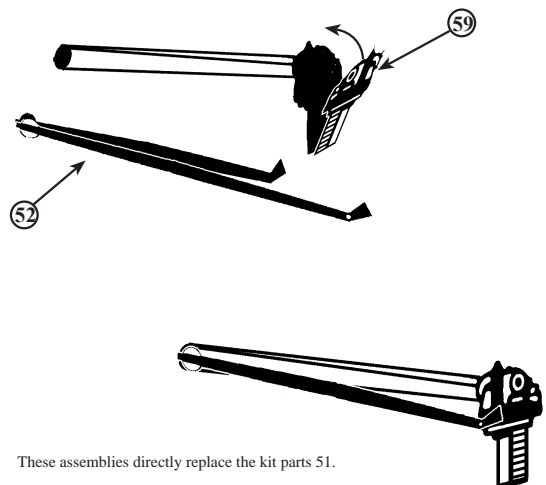
Parts Assembly Scharnhorst / Gneisenau

MAIN CRANE JIB ASSEMBLY



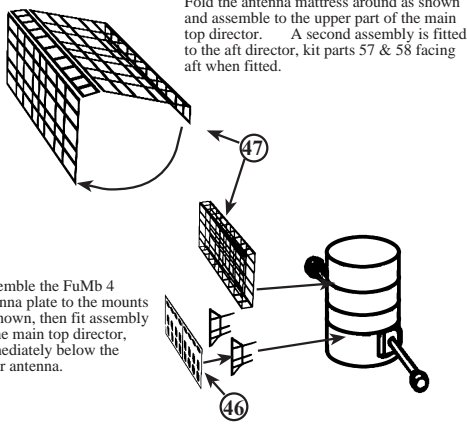
Assemble the main ships cranes as shown and set them to replace kit items 21. It may be helpful to remove the base from the kit parts crane cab to mount the Photo etched part onto as in earlier crane assemblies.

FORWARD BOAT CRANE ASSEMBLY



These assemblies directly replace the kit parts 51.

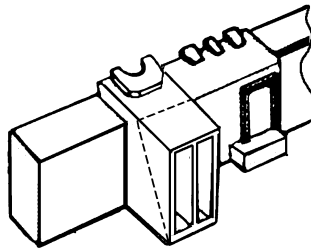
FuMo 26 & FuMb 4 RADAR



Fold the antenna matrix around as shown and assemble to the upper part of the main top director. A second assembly is fitted to the aft director, kit parts 57 & 58 facing aft when fitted.

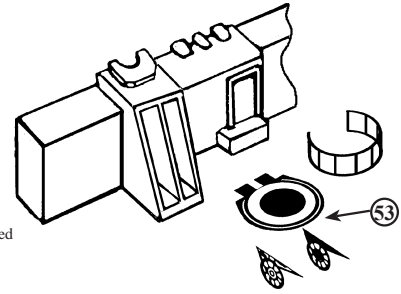
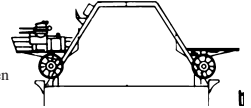
Assemble the FuMb 4 antenna plate to the mounts as shown, then fit assembly to the main top director, immediately below the radar antenna.

AFT AA GUN PLATFORM LAYOUT & ASSEMBLY

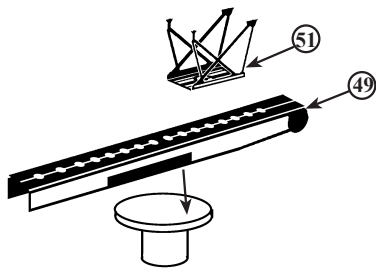


To fit the elevating AA gun mounts correctly, the kit parts 32 and 34 need to be modified by cutting away part of the side extensions at an angle as shown by the dotted line on the above diagram. The gun platforms can then be fitted to the tracks as shown right. The railing, taken from stock section, is fitted into the etched recess at the edge of the platform. AA Guns can be obtained in a separate accessory set from White Ensign Models.

These AA guns were fitted onto movable platforms so that they could be lowered to clear a way for a catapult Seaplane launch. They were then raised again when the catapult had been stowed.

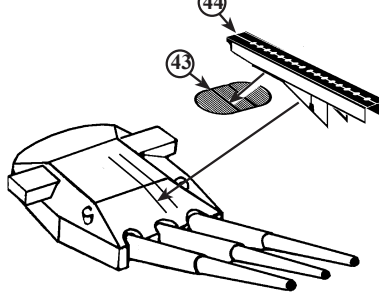


CATAPULT ASSEMBLIES

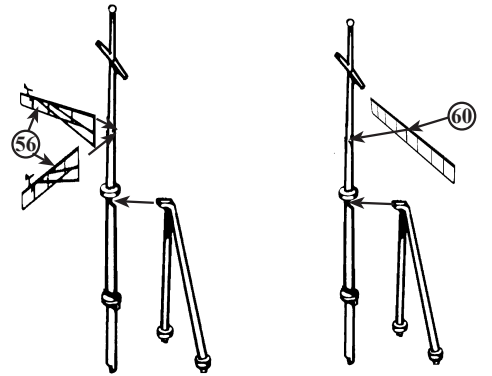


The main mid ships catapult is assembled using the etched parts 49 and 51 as shown above. The turntable is obtained by cutting away the moulded catapult track from the kit part 31.

The 'C' Turret catapult was fitted to both ships at the outbreak of WW2 but was removed from Scharnhorst earlier than Gneisenau. It seems that this catapult was removed after February 1940.



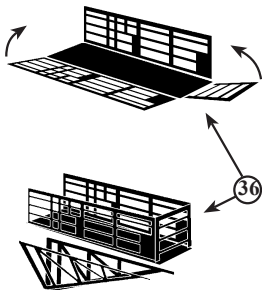
MAINMAST YARDARMS



Scharnhorst

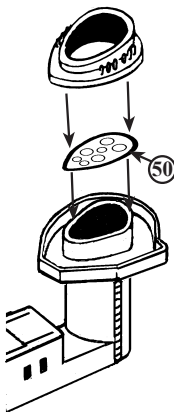
Gneisenau

BRIDGE WING EXTENSIONS



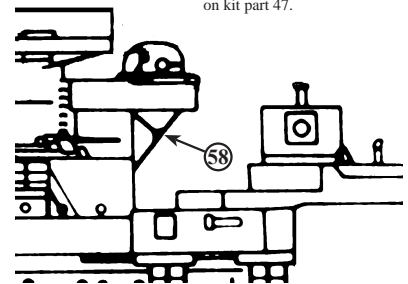
These Photo etched parts are designed to replace the moulded items on kit part 44. Fold the railings and fix in place as shown. Fit the supports so the rear one is vertical and near to the rear edge of the platform. These platforms were folded back along the sides of the superstructure when not in use for berthing the ship.

FUNNEL CAP PLATE



Fit the uptake pipe enclosure plate to the top of the funnel as shown, then fit the funnel cap over the top.

FORWARD PLATFORM SUPPORTS



Fit the forward platform supports as shown to the underside of kit part 46, so that the bottoms fit against the bulwark on kit part 47.

General Instructions

1. Do not remove the etched parts from the fret until you are ready to use them.
2. Before assembly, soak the etched parts in a suitable solvent, such as white spirit, to de-grease the surfaces for painting.
3. Cyanoacrylate adhesive (Super glue) or contact adhesive such as Elmers white glue may be used. These can be applied with a pin or piece of stretched sprue.
4. When removing parts from the fret, place the fret on a hard surface, such as a smooth ceramic tile, in order to prevent parts bending whilst cutting through the holding tabs. It is suggested that a #11 type of modelling knife blade is used for this purpose.
5. When shaping or bending a part, a straight edged blade such as a chisel blade #17 or #18 will give a good sharp corner, or alternatively a small pair of smooth jawed pliers may be used.
6. If a part is bent incorrectly, lay it on a hard flat surface and roll it flat with a cylindrical object such as a modelling knife handle.
7. It is suggested that rails are pre-measured, where practical, using a pair of compass dividers and then tacked to the deck edge every third or fourth stanchion with a small drop of glue. When a section is complete, run a thin line of glue along the inside edge to attach it firmly to the deck.

We hope that you will find this set to your satisfaction and that you enjoy assembling the fittings to the kits.

HAPPY MODELLING
FROM ALL AT
WHITE ENSIGN MODELS

